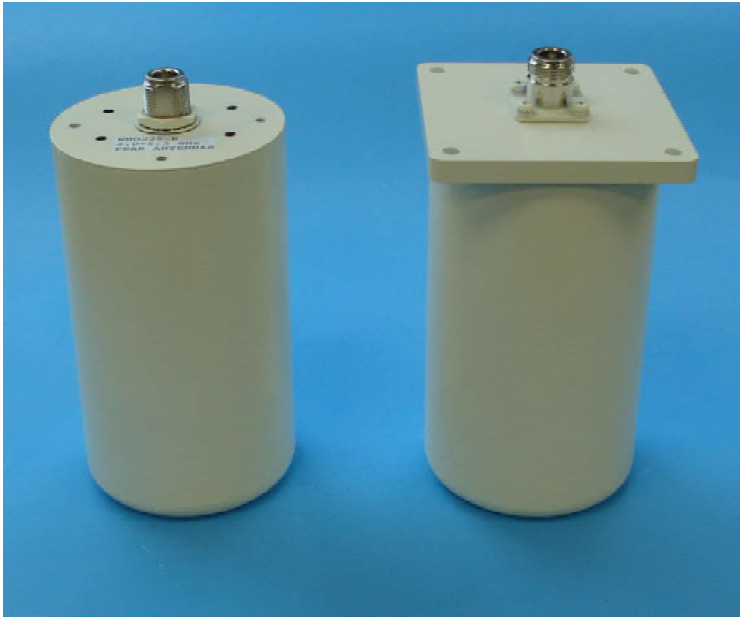


WIDEBAND HEMISPHERICAL OMNI ANTENNAS (WHO)



WHO225 versions with tapped holes and flange

For air-to-ground applications. When coverage is required overhead, at the horizon and at all angles in between.

Omnidirectional azimuth radiation pattern with complete hemispherical coverage and no gaps.

Uniform performance over wide bandwidths, with 2 dBi gain.

Wide operating bandwidths, including 1.7-1.9 GHz, 2.0-2.5 GHz, 2.2-2.7 GHz, 4.4-5.0 GHz.

RHCP up/down transitioning to elliptical V poln on horizon.

Particularly suitable for use with diversity receive set-ups with RHCP uplook and V poln. sectors.

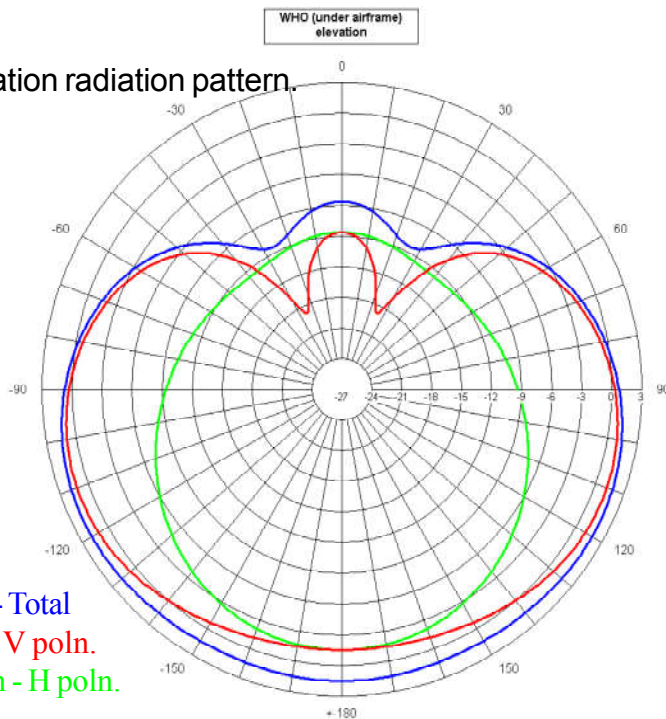
Ground plane independent.

Aluminum alloy body and polypropylene radome.

Mounting via tapped holes in solid base or through hole flange (compatible with Dart Cross-Tube antenna mount).

Connector: N or SMA female
Frequency bands: see list over
Gain: 2dBi
Polarization: RHCP / V
Return loss: 14dB (1.5:1 VSWR)
Power handling: 10W

Elevation radiation pattern.



PEAK ANTENNAS

www.peakantennas.com

Peak Antennas LLC
236, Main Street, Suite C
Monroe, CT 06468 USA
Tel/Fax: +1 203 268 3688
info@peakantennas.com
MDPeakantennas@aol.com

WIDEBAND HEMISPHERICAL OMNI ANTENNAS (WHO)

| Designation | Frequency | Diameter (radome) | Height |
|-------------|-------------|----------------------|----------------|
| WHO180 | 1.7-1.9 GHz | 98.9mm (3.89") | 139.0mm (5.5") |
| WHO225 | 2.0-2.5 GHz | 80.0mm (3.15") | 138.0mm (5.4") |
| WHO245 | 2.2-2.7 GHz | 80.0mm (3.15") | 138.0mm (5.4") |
| WHO340 | 3.1-3.7 GHz | 54.4mm (2.14") | 110.0mm (4.3") |
| WHO470 | 4.4-5.0 GHz | 39.3mm (1.55") | 90.0mm (3.5") |
| WHO555 | 5.2-5.9 GHz | 33.8mm (1.33") | 80.0mm (3.15") |
| WHO655 | 6.4-6.7 GHz | 29.0mm (1.14") | 73.5mm (2.9") |

Please ask us if you have a frequency requirement not listed here.



WHO655 antennas with tapped holes and through hole flange mount (above).



WHO225 antenna mounted on light aircraft (right).

PEAK ANTENNAS

www.peakantennas.com

Peak Antennas LLC
236, Main Street, Suite C
Monroe, CT 06468 USA
Tel/Fax: +1 203 268 3688
info@peakantennas.com
MDPeakantennas@aol.com