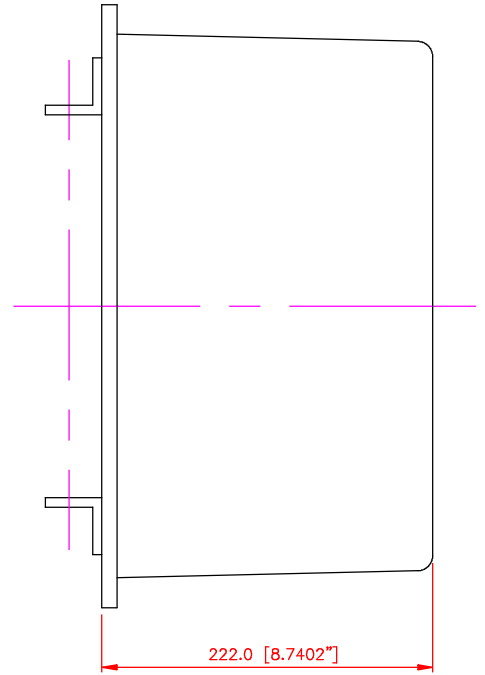
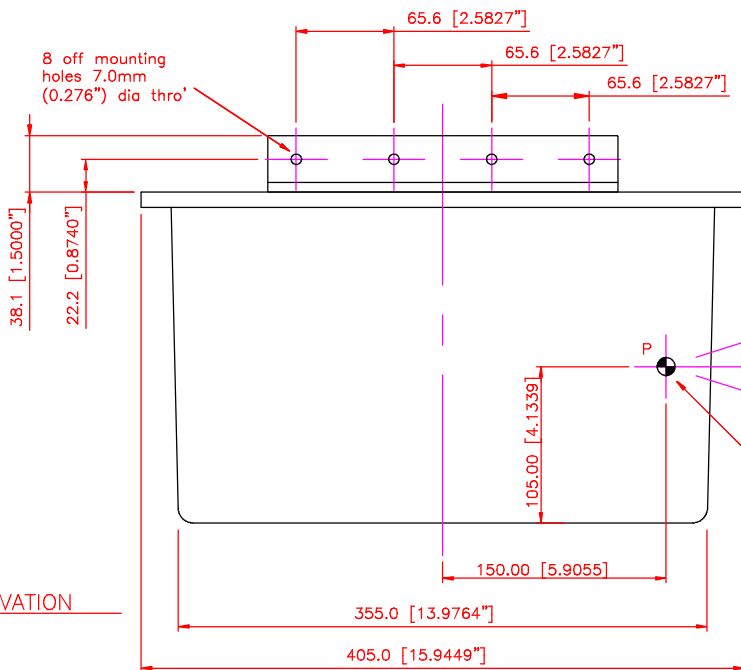


PLAN VIEW



FRONT ELEVATION

HOLE	DESCRIPTION
A	RF Input, Main Array, N Female
B	RF Input, Downlook, SMA Female
C	RF Input, External GPS, TNC Female
D	Control, 19 way circular



SIDE ELEVATION

TOP PLATE

MATERIAL : 6082 ALUMINUM ALLOY

RADOME

MATERIAL : FIBERGLASS / POLYESTER RESIN COMPOSITE WITH GELCOAT

WEIGHT : 15 LBs (6.8 Kg)

Point 'P' is phase centre of typical azimuth beam. Elevation radiation pattern b/w is 35° (-3dB points).

TITLE : PA16 OUTLINE
 DRG # : G1007
 PEAK ANTENNAS LLC